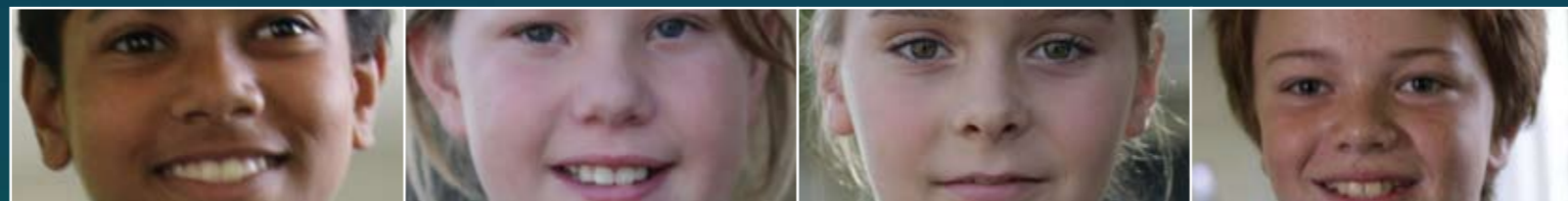


# LINWOOD

## INTERMEDIATE SCHOOL

# prospectus



Linwood Intermediate School 7 McLean Street CHRISTCHURCH

tel : (03) 389 8043 email : [principal@linwood.school.nz](mailto:principal@linwood.school.nz)

web : [www.linwood.school.nz](http://www.linwood.school.nz)

# LINWOOD INTERMEDIATE SCHOOL

OUR CHILDREN OUR COMMUNITY OUR FUTURE

Educating children for the future

They will be  
confident,  
connected,  
actively involved  
and  
lifelong learners

To do this we focus on:

Values  
Literacy  
Numeracy  
Inquiry Skills

## from the principal



**O**ur Children are special to us. Each is an individual and we treat them as individuals. Each has an individual record of achievement that tracks their progress in literacy, numeracy, essential skills and technology. Teachers then work with the pupils to set goals and work with pupils to plan how to meet these goals.

**Our Community** works with us to bring out the best in our children. Parents are a vital part of a child's education. We keep parents fully informed on how their child is doing at school. We work together to get the best of a pupil.

**Our Future** is exciting. This year we plan to refurbish all existing classrooms. The refurbishment will make the existing classrooms bigger and have been redesigned to better enable pupils to work independently on individual "inquiry" projects.

The 2008 ERO reports comments

*"Pupils experience good quality to excellent teaching across the school. ERO observed very good levels of on task learning in classrooms. Class programmes focus on improving reading and numeracy levels. Pupils' learning needs are well identified through teachers' assessments. Pupils who have particular learning needs are taught in small groups by specialist teachers. Teachers help pupils and their parents to track learning progress through a record of learning. All pupils are given the opportunity to follow their interests in technology, play sport and participate in outdoor activities."*

Lee Walker  
Principal

Linwood Intermediate Legends... active, kind, proud, respectful, risk takers

# our curriculum

Top priority is given to teaching pupils the basic skills of reading, writing and mathematics.

- **English** - includes reading, written language, oral language, library and research skills and interpreting visual information  
Pupils receive a minimum of 6 hours of English each week.
- **Mathematics** – includes numeracy and problem solving skills  
Pupils receive a minimum of 6 hours of Maths a week

### Integrated Inquiry Learning incorporating

- Social Studies
- Health and Well being
- Science
- Environmental Education
- Physical Education
- Visual Art
- Technology – fabric
- Technology – food
- Technology – hard materials = wood, metal, plastics and electronics
- Performing Arts – music, dance and drama
- Information and Communication Skills – includes computer skills and the use of a range of multimedia

### Fitness

We believe that physical exercise at the start of the day gets pupils ready to start learning.

### Tikanga and Te Reo Maori

All pupils receive 45 minutes of lessons each week for Tikanga Maori and basic instruction in Te Reo. This is aimed at enabling pupils to correctly pronounce Maori names and understanding the culture of the tanga whenua of New Zealand.

### Samoan Language and Culture (optional)

Samoan pupils have the option of a 45 minute a lesson a week in Samoan Language. This is at two levels: either a basic introduction for non speakers of the language or advanced lessons for speakers of Samoan.

### English as a Second Language (ESOL)

Pupils who do not have English as a first language receive two lessons a week to help learn English.



# literacy

We have programmes to ensure each pupil has their individual needs met.

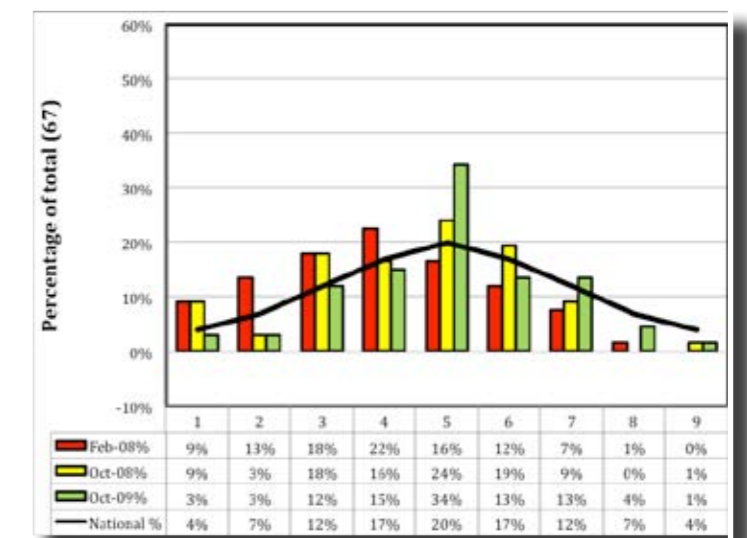
Pupils are assessed on entry to Linwood Intermediate by using the STAR test. This reports a pupils achievement relative to the rest of new Zealand pupils.

This is used to group pupils into appropriate groups. Those most in need receive support from Resource Teachers of Learning Behaviour (RTLB), Teacher Aides and Support Teachers.

The results are recorded in an Individual Pupil's Record of Learning and Achievement. The Record of Learning is used to develop goals for each pupil.

We then track the pupil's progress over their time at Linwood Intermediate. We are very pleased to report the school's progress below.

**Change in STAR Stanine all pupils who were at Linwood Intermediate at the start of Y7 (2008) and still there at the end of Y8 (2009)**



Explanation. The black line shows the Normal Curve for all pupils in New Zealand. The red line is for pupils on entry. It shows more pupils below average than the rest of New Zealand. However after 2 years the green line shows a reduction in the number below average and overall the pupils are achieving similar to the rest of New Zealand.

# inquiry learning

The rapid development of computer technology and the extensive access young people now have to a wide range of information has caused us to rethink and redevelop the way we teach so that pupils develop the skills, attitudes and beliefs they will need for the future.

**Inquiry Learning** means the pupil can learn across many subject areas in an integrated way, rather than taking the learning apart into disconnected, unrelated activities taught separately.

## Important Features of Inquiry Learning

- The focus is on significant concepts and understanding.
- Learning is connected to the real life of pupils.
- It is purposeful and meaningful.
- Teacher and learner are working together.
- Learning is planned as an inquiry process and the pupil can follow their own interest across many subject areas and see the connections between them
- There is an emphasis on critical thinking and reflection about learning.
- It allows the pupil to follow an area in their own individual way and allows for creative thinking and constant innovation
- It allows each pupil to become more aware of their own learning preferences and allows for both team and independent learning.

All pupils are involved in hands on active learning in and out of school and in the wider community.

## Trade day

Every 2 years the pupils have a Trade Day. For this they prepare a business plan to design, produce and market something to sell on Trade Day. This varies from food items to key rings. The items are sold and the pupils use the profits to help pay for Recreation week activities.



# school wide positive behaviour

We believe that for pupils to achieve their maximum in the basic skills of reading, writing and math they need to be focused on their learning.

In 2010 we introduced a programme called Positive Behaviour for Learning. This is a programme that has been very effective in America and Australia.

It sets clear rules for behaviour such as:

- Be safe
- Be respectful
- Be responsible

The pupils are taught what it means to be safe, respectful and responsible in different places at school e.g. classroom and playground.

When pupils display what is expected of them they are rewarded.

When pupils are not acting safely, respectfully or responsibly this is pointed out to them and appropriate consequences are put in place.



## pupil leadership

### School Council

Each class selects 2 representatives. They attend the school council. The school council meets every fortnight with the principal to give feedback about how the school is going. In 2009 they were responsible for initiating fund raising for the goal posts and raising money for the Samoan Tsunami.

### House captains

The school has recently introduced Houses. Each house has a male and female house captain and deputy house captain. They are responsible for organising teams to take part in the interhouse competitions.

### Enviro group

Pupils in the enviro group take responsibility for collecting food rubbish around the school and taking it to the school composting bins and worm farm. They are also looking at reducing classroom waste and recycling it.

### Librarian

The school librarians help class teachers and the school librarian with issuing and collecting books.



## sporting and cultural



### Sporting

We believe it is important to help pupils to be physically fit. We offer a wide range of summer and winter sports. Pupils have sport every Tuesday afternoon as well as physical education.

### Sport

- participation in Christchurch and South Island Intermediate interschool competitions.

- Athletics
- Basketball
- Cross Country
- Cricket
- Hockey
- Netball
- Rugby League
- Rippa Rugby
- Soccer
- Softball
- Swimming
- Touch
- Volleyball

### Cultural

Opportunities to learn skills, participate and perform in:

- Choir
- Cultural Festival
- Instrumental Groups – tuition in keyboard, clarinet, flute, drums, violin,
- Kapa Haka Group
- Music Festivals
- Samoan Cultural Group
- School Productions
- Theatre Sports
- Wearable Arts

### Outdoor Education and Recreation

#### Programmes

A range of activities are offered during the year: Chess, Drama, Ski Trip, Rock climbing, Mountain Biking, Ice Skating, Aquatics, Scuba Diving, Field Trips, Sailing.

# school facilities

Linwood Intermediate School is a well equipped intermediate school set in spacious grounds with facilities that are specially designed to cater for the needs and interests of 10 to 13 year olds.

The specialist facilities include:

- art room
- food technology room
- information technology computer suite and computer pods throughout the school. In 2009 the school purchased 30 new computers for the ICT room. The school has also invested heavily in cabling within the school to enable fast broadband.
- library and learning resource centre
- materials wood /metal technology room
- music room
- science room
- textiles/fabric room
- Whanau / Samoan room

In 2009 we started refurbishing our old classrooms. By the end of 2010 all the old rooms will be replaced by much larger rooms complete with data projectors or activiboards.

In 2010 we will start planning the refurbishment of the existing library ICT space.



# Information for Parents

## Attendance

Regular attendance is required. If a pupil is going to be absent, through illness or any other unavoidable cause, parents/ caregivers are requested to telephone the school office prior to 9.00a.m. If the school has not heard from a parent by 10.00 we ring to determine the reason for the absence. When the pupil returns to school an explanatory note from a parent/ caregiver about the absence is requested.

## Communications/Concerns

Parents and families are an important part of each child's learning and we welcome your contact and involvement with the school. Our contact numbers are: phone 3898 043, or text 021 170 1820.

Parents are invited to contact the school at any time. If a matter concerns the welfare of any pupil, don't hesitate. You can contact us by telephone, a letter, or feel free to come and talk with us.

## Hours

School Hours are from  
8.45a.m - 12.30p.m.  
1.15p.m. - 3.00p.m.  
Pupils should not be in the school grounds before 8.20a.m.

## Lunch

The school does not take orders for an outside shop to supply lunches. If a family has not been able to provide lunch, sandwiches are available from the office at a small cost. Pupils are not permitted to leave the school grounds to buy lunch.

## Study Centre

An after school study centre operates three nights a week from 3.00 to 5.00pm. The study programme covers homework completion, computer skills and help with remedial literacy and numeracy.

## Newsletters

We recognise how important you are to your child and we want to keep you really well informed about what is happening at the school. To do this we send regular newsletters home.

## Homework

Homework, which is relevant and appropriate, will be set during the school week and we expect it will be done.

## Damage and Breakage

Most damage to school property is accidental and minor, but it is still costly in total. Insurance policies held by the Board of Trustees do not cover the first \$500 of each claim so pupils are asked to meet part of, or all of, the cost of damage or loss, up to this amount. This applies to structures, windows, equipment, books, etc.

## School Donation and Fees

At Linwood Intermediate we try really hard to keep the costs to families as low as possible. The Board of Trustees subsidizes many activities throughout the year – this is often a great saving to family budgets.

There is also a Technology fee for all pupils of \$60.00 per child. It is a materials fee for the foods, materials, woods, metals, plastic, clay, paints that are needed in the Technology Programme .



Linwood Intermediate Legends... active, kind, proud, respectful, risk takers